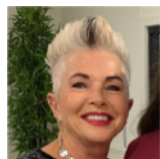


Byron Bay Bridge Club Newsletter

Keeping you up to date with club news



August 2023

Greetings members,

Amazing how quickly our club can change within a month!

Last month I was asking you to be patient with the Bowlo and now we are, I hope, happily ensconced at the All Souls Church Hall in Bangalow. The Bowlo had cancelled our booking for a couple of Fridays in June and we had decided to play at the church hall for these two Fridays and the week in between. Once we were at the hall it was as if a breath of fresh air arrived amongst the members. The hall had everything we were looking for... we don't have to work around other people using the space, plenty of room for our tables, a well appointed kitchen for our afternoon teas, freedom to have our social time afterwards and plenty of storage space for our equipment. Weekly rental fees are manageable and apart from being a tad cool in the winter months it was agreed it was a good compromise for us to complete our 6 month trial away from the Cavanbah Centre at the hall. We have the option of staying on after November but that is of course up to the you when you will be asked to vote on the future of our club's "home".

I also want to cover our 2023 fee structure. These fees were put in place at the beginning of the year when we were at the Cav centre. Table numbers had fallen and costs were increasing and fees were adjusted to manage this. With the increase in visitors table fees there has been a significant increase in associate membership and to honour our associate members and their commitment to our club, our visitors table fees will remain as is for 2023. All club fees will reassessed depending on our location for 2024. Some members have questioned the visitors fees now that our weekly rent has dropped and I hope that after reading this you will understand the need for the fees to remain as is for now.

It's so good to see our table numbers staying consistently the same even though quite a large number of regular members have been away during July. Eric and I away most of August so it good to see some new faces helping out with our room setup, computer and directing. Have a great month.

Eda

We meet every Friday at the
All Souls' Anglican Church Hall
1 Ashton St Bangalow
We ask that you be seated by 12.15pm
for play to commence promptly at 12.30.

Table Fees
\$6 members/visitors \$10
Join us for a social time afterwards.
BYO drinks and glass

Directory

President Eda Bridgeman 0411 872 423/66930359
Vice President Brian Sundstrom 0429 311 830
Secretary Leo Prendergast 0429 672 262
Treasurer Greg Farrell
Committee Members: Helen Baker, Kay Milne,
Patricia Ellis, Starlette Beaumont, Eileen Malabre

AUGUST REMINDER

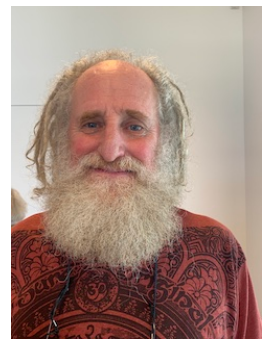
**WINE TASTING
FRIDAY 4TH AUGUST**



HAPPY AUGUST BIRTHDAYS

Jan Gasteen 6th
Dennis Prior 20th
Michael Duffin 23rd

**AND TO ANY OTHERS WE
DON'T KNOW ABOUT**



2 way check back

1. Introduction

Bridge is not about conventions but about the basics of card play. When playing singles bridge, everyone plays with everyone else and the only conventions are the most basic. What is important is your carding. We looked at this over the last two months and this is where you can achieve your best gains at bridge.

After mastering carding there are a few conventions that are considered mandatory – these are: -

- Stayman
- Transfers over 1NT
- A version of Blackwood

I would consider checkback as the next most important convention. It comes up more often than blackwood and is therefore something that I promote as a convention to add to your inventory. It is hard for me to remember a session without checkback.

2. The scenario

What do you bid after these sequences with the following hand

1C-1H-?

1C-1D-?

♠ A Q 9 6
♥ T 8 6
♦ K 8
♣ A T 9 7

We were taught to bid our 4 card suits up the line. Thus the answer to the questions is most likely 1S.

Modern thinking tells us to skip the 1S and bid 1NT. Why would we do this and miss our 4-4 spade fit?

There are several reasons, lets look at each of them.

2.1. The correct hand plays the contract

♠ 8 4 3
 ♥ K 9 5 3
 ♦ T 9 7 6
 ♣ Q J

Do you want to let partner bid and play 1NT? We usually try and let the stronger hand remain hidden. Partner will thank you for bidding 1NT and saving them from this fate.

2.2. Who plays 3NT

If you open 1C with this hand

♠ A Q 9 8
 ♥ J T 8
 ♦ Q 8 5
 ♣ K T 9

If partner bids 1NT after your 1S, they get to play 3NT, with the strong hand exposed.

2.3. We will miss our fit

Here are the two hands

♠ A Q 9 8
 ♥ J T 8
 ♦ Q 8 5
 ♣ K T 9



♠ T 7 6 5
 ♥ K Q 6 4
 ♦ 4 2
 ♣ J 8 7

Makeable status

24/24

Makeable contracts

	N	S	E	W
C	7	8	5	5
D	8	8	5	5
H	5	6	7	7
S	5	6	7	7
NT	5	6	7	7

♠ K J 2
 ♥ A 7
 ♦ A K J 3
 ♣ 6 5 4 3

3.1. How does it work?

After opener has rebid 1NT, responder can use these conventional bids

- 2C – transfer to 2D, 10/11 invitational
- 2D – game forcing

Or

- 2 repeat major – to play
- 2 other major – if hearts, no game interest, if spades 4-4 invitational 10/11
- 2NT – 10/11 balanced

3.2. 2C by responder

2C by responder asks opener to bid 2D. It shows 10/11 points, invitational. After 2D, responder further describes their hand. For example rebids a 5 card major.

3.3. 2D by responder – GAME FORCE

2D by responder shows a game force hand. Opener now shows

- 4 of the other major first
- Without 4 of the other major, 3 of responders major
- If none of the above, 2NT

Responder can now place the contract.

4. Examples

4.1. What about this hand?

♠ A Q 9 8
♥ J T 9 8
♦ Q 8
♣ K T 9

You open 1C, partner bids 1D, you bid 1NT. Yes, that's right, don't mention your majors. Even with 4-4 in the majors you can bypass them and bid 1NT.

4.2. Finding a spade fit

4

<p>♠ A Q 9 8 ♥ J T 8 ♦ Q 8 5 ♣ K T 9</p>		<p>♠ K T 5 4 ♥ A K 9 6 2 ♦ A J ♣ A 3</p>
--	--	--

In this example the bidding will proceed as follows – West is dealer

1C 1H
1NT 2D*
2S* 4NT*
5C* 5D*
6C* 7S
2D - game force checkback
2S – 4 spades
4NT – RCKB in spades
5C – 1 or 4 keycards
5D – do you have the Q of trumps
6C – yes and the K clubs

4.3. Finding a heart fit

<p>♠ A Q 9 8 ♥ J T 8 ♦ Q 8 5 ♣ K T 9</p>		<p>♠ K T 5 ♥ K 9 6 3 2 ♦ A J 3 ♣ A 3</p>
--	--	--

In this example the bidding will proceed as follows – West is dealer

1C 1H
1NT 2D*
2S* 3NT*
4H* Pass

2D – game force checkback
2S – 4 spades
3NT – we have game, since I don't have 4 spades, I have 3 hearts
4H – place the contract

Since partner used 2D to show either 5H or 4-4 in the majors, opener can happily bid 4H showing their 5-3 fit.

4.4. Invitational – passed

<p>♠ A Q 9 8 ♥ J T ♦ Q 8 5 ♣ K T 9 5</p>		<p>♠ K T 5 ♥ 9 7 6 3 2 ♦ A 3 ♣ A 4 3</p>	
--	---	--	--

In this example the bidding will proceed as follows – West is dealer

1C 1H
1NT 2C*
2D* 2H*
2NT* Pass

2C – transfer to diamonds
2D – forced
2H – 5 hearts and 10/11 points
2NT – this is our best contract

4.5. Invitational – accepted

<p>♠ A Q 9 8 ♥ J 3 ♦ K J 9 ♣ K T 9 6</p>		<p>♠ K T 5 ♥ A 9 7 6 2 ♦ 8 3 ♣ A 4 3</p>	
--	---	--	--

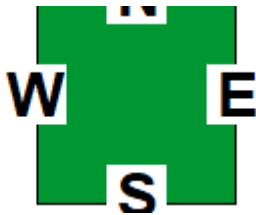
In this example the bidding will proceed as follows – West is dealer

1C 1H
1NT 2C*
2D* 2H*
3NT Pass

2C – transfer to diamonds
2D – forced
2H – 5 hearts and 10/11 points
3NT – this is our best contract

4.6. Bypassing checkback

♠ A Q 9 8
 ♥ J 3
 ♦ K J 9
 ♣ K T 9 6



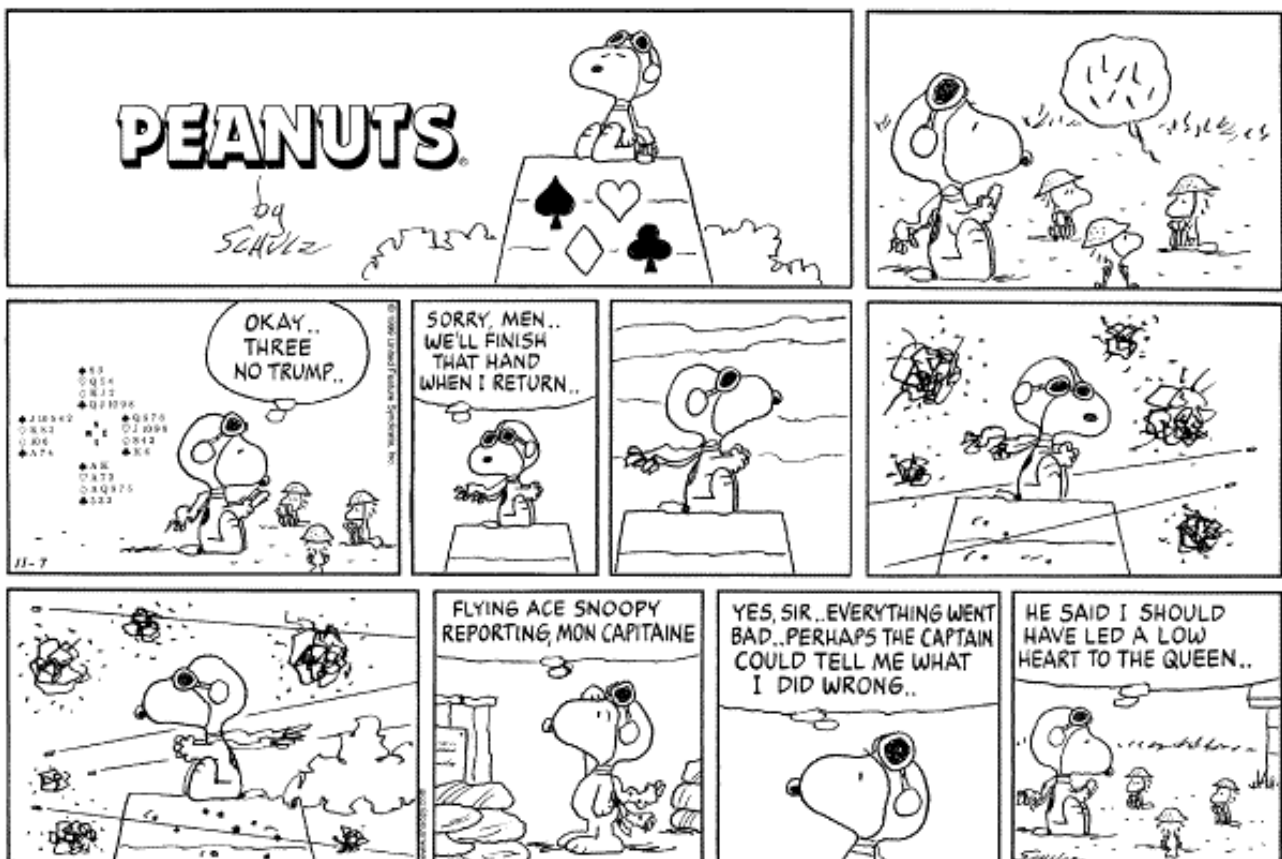
♠ K T 5
 ♥ 9 7 6 5 2
 ♦ 8 3
 ♣ A 4 3

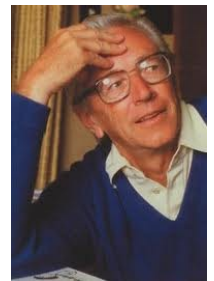
In this example the bidding will proceed as follows – West is dealer

1C 1H
 1NT 2H*
 Pass

2H – 5 hearts, less than 10 points

Thanks again Clive





Charles M. Schulz (1922 – 2000), creator of the world famous comic strip Peanuts, was an avid bridge player, and from time to time Snoopy is portrayed sitting on the roof of his dog house, playing bridge with his feathered friends. You can imagine Schultz' delight when, in 1997, Snoopy and Woodstock were made Honorary Life Masters by the American Contract Bridge League, the only two players to have ever been so honoured.

Schultz celebrated the occasion with a comic strip showing Snoopy in flying gear, in his alter-ego as the great WW1 flying ace, playing bridge in his off duty time with Woodstock and two other friends all helmeted. ready for action. As declarer in 3NT, and in deep trouble, Snoopy stops the game.

"Sorry, men. We'll finish that hand when I return."

He flies off on the dog house, dodging a deadly barrage of anti-aircraft fire, back to base.

"Flying Ace Snoopy reporting, mon capitaine. Yes sir. Everything went bad. Perhaps the capitaine could tell me where I went wrong."

Snoopy makes the perilous flight back to the bridge game, where the troops are patiently waiting.

"He said I should have led a low heart to the queen."

On such occasions Schultz' non-bridge-playing fans were at a loss as to what was going on, but they never seemed to mind too much.

MEET GARY LYNN

I was born in Kyogle hospital and lived in Woodenbong for one year.

My parents then moved to Knockrow and bought a beautiful farm with the help of a Stock and Station Agent who lent them all of the money. Setting up with 150 cows, 100 odd pigs, many calves and 7 acres of bananas and the help of their 4 boys and 2 girls, they soon paid their debt off.

I rode my horse to Newrybar Primary School (2 miles) until the age of 8. Then travelled by bus to Ballina Primary and completed the Leaving Certificate at Ballina High School. I loved sport, tennis, cricket, rugby league, athletics, squash etc. My mother "blackmailed" me through school using, as she said, "sport restrictions as an incentive".

I gained a Teacher's College Scholarship specialising in mathematics. My first appointment was Woodenbong High, then Casino High, Ballina High, Richmond River High and finally Kadina High when I retired in 2004.

I met my first wife in Woodenbong and we had 2 girls and 3 boys. Twenty odd years later we divorced and four years later I married again and divorced after twenty years. I have 10 grandchildren and 2 great grandchildren.

I began playing bridge at the end of 1977 and it soon became a big part of my life. Tom McDonald became my mentor and partner. I have had many bridge partners over the years and have enjoyed playing with them all. My present bridge partners are Anne Riley and Clive Klugman.

During my 40 years of playing bridge one of the funniest incidents I can remember was in Canberra. A woman got up from the table during play, walked around the table to her husband, picked up his glass of water and tipped it over his head. She then went back to her seat and pored her glass of water over her head.

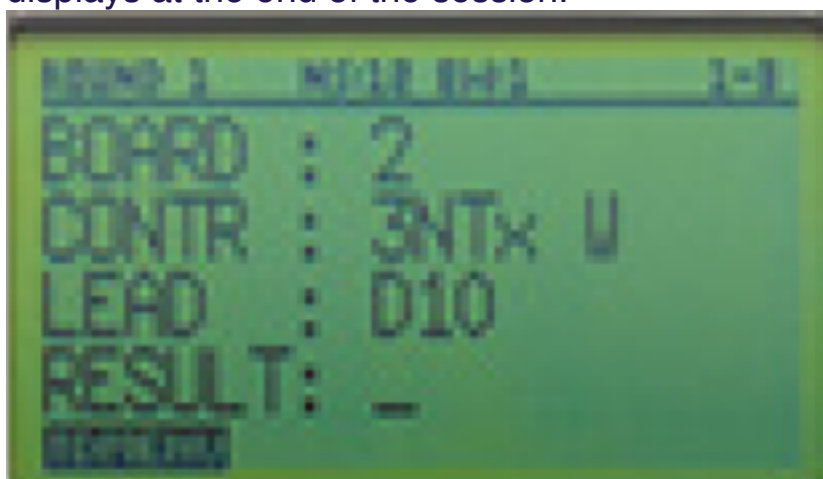
During my bridge career I have had many successes and formed many great friendships which I still enjoy today.

We at BBBC have been doing this now for a couple of months and here are the reasons why..copyright approved by Mark

Bridgemates - Lead Card Validation **Mark Miller**



For some time now we have been entering the lead card into the Bridgemates. The software made it an option which was adopted by Ballina for a number of reasons. Some members like to study the online results to see whether the choice of lead affected the contract. Perhaps others like to see what the more experienced players led when they faced the identical decision. But for directors the information is helpful in examining the result anomalies that our scoring program Compscore2 displays at the end of the session.

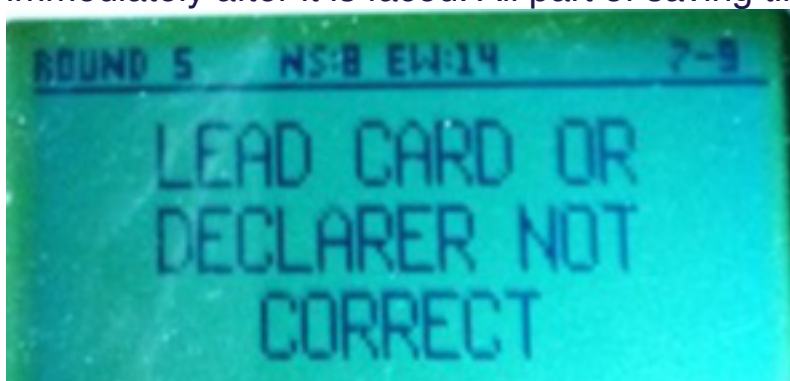


Bridgemate with lead

An example might be a contract of 4H by North making 11 with both sides vulnerable. The score shows as 650. But Compscore says this is suspicious as NS only have 4 trumps! If the players concerned are still present then they can be consulted. But if they have all left, the director is not supposed to change a score that has been accepted without player consultation. Suppose the actual result was 4H by East making 11 with a score of -650 to NS. In checking the Bridgemate, West had not noticed the absence of the negative sign or the incorrect declarer. In such situations the director will look at the lead card. If it was a card that belonged to South then there is no problem in making the sensible correction to 4H by E. This avoids a phone call that evening and having to make a subsequent change, reprinting and republishing the results.

It follows that it is important for the lead card to be entered correctly and it is great to be able to report that by querying this year's data, I found that there has been a 95% success rate.

But now we can get a 100% success rate as software enhancements have the hand records available to the Bridgemates. So an error message will appear on the screen if the lead card is not consistent with the data in the hand record. This might be because the declarer has not been entered correctly or the declarer is correct but the indicated card does not belong to the hand that is on lead. This feature has been active since 18th September and has had the planned benefits plus early detection of a board that was fouled and two that were played reversed - north had the south cards etc. Some Bridgemate operators have the practice of entering the required information at the end of the hand. In doing so the operator may forget the lead and have to waste time questioning the other players. So please enter the contract, declarer and lead card as soon as possible. The latter ideally immediately after it is faced. All part of saving time at the table.



Error notification

NOTE: It would be preferable if any error concerning the lead card was detected immediately after the information was entered into the Bridgemate. But this introduces the possibility of cheating by a Bridgemate operator who is also declarer for that hand. For this reason the error message like the one shown will only appear after EW has clicked on the Accept button. The error message will only stay on the screen for short time and then the screen will revert to result entry where the operator can make the required changes. The Bridgemate will not advance to the next hand until the lead card is correct and the data has been accepted successfully.

The overall goal is to have less anomalies detected by the scoring program so faster finalisation of the results. Stay at the club if possible to socialise, enjoy a drink and congratulate the winners who will hopefully be announced quickly.

JULY WEEKLY BRIDGE WINNERS

7th July

**N/S Carol Hocking & Judith Crafti
E/W Graham Askey & Sue Ryan**

14th July

**1st Sophie Davis & carol Hocking
2nd Anne Riley & Gary Lynn**

21st July

**N/S Anne Riley & Gary Lynn
E/W Renia Gyrc & Ruth Langford**

28th July

**N/S Graham Askey & Sue Ryan
E/W Renia Gyrc & Ruth Langford**

